

Dear Parent/Guardian,

It gives me great pleasure to present to you via this prospectus some information about the school. This prospectus is intended to help you know more about the life and work at Ysgol Gymraeg Rhys Prichard.



The children are the heart of every decision we make here at the school, as to ensure they are happy, confident and successful individuals. Our aim is to ensure an engaging curriculum so that our pupils can foster a passion for learning and to develop high aspirations and success for their future.

I consider myself exceptionally fortunate to lead such a dedicated and committed team of staff that work hard to reach the highest standards. It is our priority to ensure your child's success by working closely with yourselves as parents and guardians, the local community and other schools in the cluster. We firmly believe that your child's education is a partnership between home and school, and value your support at all times.

As staff, we have no doubt your child will thrive under our care and support here at Ysgol Gymraeg Rhys Prichard. The standard of education and opportunities your child receive during their educational journey will prepare them for the ever-changing world we live in.

After reading this prospectus you might want further information. If so, you may contact me at the school.

Edward Davies

A handwritten signature in black ink that reads "E T Davies". The letters are cursive and fluid.

Headteacher

March 2026

Our School

Ysgol Gymraeg Rhys Prichard is a community primary school on the edge of an old market town in the heart of the upper Towy valley, in north Carmarthenshire. The school was known as Llandovery County Primary School until December 1994 when it was officially renamed Ysgol Rhys Prichard, Llanymddyfri to commemorate the 350th anniversary of the death of the famous Vicar Prichard of Llandovery. In September 2025, the school was renamed Ysgol Gymraeg Rhys Prichard to celebrate that we are a Welsh speaking school. The school moved to its new existing site in February 2021.



The school is designated as a Welsh-medium school in accordance with the Education Authority's language policy. This means that Welsh is the main medium of the life and work of the school and seeks to ensure that pupils are fully bilingual by the time they transfer to the secondary sector.

School Vision

Develop happy, healthy and bilingual pupils who achieve their potential in a positive and memorable learning environment

Aims and Objectives

Inclusive

We will be an inclusive school by:

- Providing equal opportunities for everyone regardless of religion, race, ability, culture, gender and age.
- Establishing a good working relationship with all pupils, parents, staff, Governors and the community.
- Be respectful and respected.
- Celebrate, embrace, and value diversity.
- Adopting an open-door policy.
- Valuing each person as an individual.



Challenge to succeed

We will challenge to succeed by:

- Creating a learning and teaching environment that promotes and motivates all
- Setting aspirational targets
- Strive to achieve full potential
- To focus on excellence
- Enjoy challenge, celebrate and share success

Inspire

Create an inspiring Child Centered environment that is/ encourages children to be:

- Happy
- Confident and independent
- Respected
- Stimulated
- Share opinions / experiences.
- Positivity
- Continually developing
- Safe and secure
- Friendly
- Meeting individual needs
- Working towards their potential
- Working together
- Trust- pupils and staff
- Balanced pupils
- Sociable



Welsh culture

We will celebrate and promote our language and culture by:

- Igniting enthusiasm and encouraging respect
- Creating awareness of the country's history, its development, housing, food, clothing
- Promoting recognition of our country-traditional tunes, folk, choral singing, hymns and dance
- Respecting and promoting its traditions through the eisteddfod, concerts and celebrations
- Taking part in Urdd activities
- Enjoying and creating art. Inviting artists, actors and poets to be part of school life
- Participating in annual celebrations and competitions



Staffing Structure – December 2025

Headteacher	Mr Edward Davies
Assistant Headteacher	Mrs Bethan Jones
ALNCo	Mrs Tracey Aston-Rees
Teaching Staff	Mr Emyr Richards
	Mr Gareth Salt
	Miss Catherine Spencer
	Mrs Margaret Williams
	Mrs Angharad Davies
	Ms Delyth Jones
	Ms Jessica Thomas
School Admin. Officer	Mrs Charlotte Evans
Full Time Teaching Assistants	Mrs Wendy Sidaway
	Mrs Heulwen Land
	Miss Sonia Marsland
	Mrs Kim Price
	Mrs Teleri Nicholas
	Mrs Bettina Thomas
	Mrs Miriam Evans
Part-time Teaching Assistants	Ms Susan Thomas
	Mrs Paula Hilliam
Cleaners / Caretaker	Mrs Tammy Thompson-Waters
	Mr Tim Morgan (Caretaker)
Peripatetic Staff	Mrs Caroline Ward
	Mrs Margaret Denyer
	Ms Catrin Soons

Additional Learning Support	Mrs Rachael Davies
Lunchtime Supervisors	Mrs Denise Weatherill
	Mrs Glenys Watts
	Mrs Louise O'Connor
	Mr Tim Morgan
	Ms Heather Jones
Cook in Charge	Mrs Sandra Ardolino
Catering Assistants	Mrs Rachel Waters
	Mrs Jane Kelly
	Mrs Margaret Denyer
	Mrs Amanda Wilkinson





School Governing Body

Name	Status
Mrs C Pritchard	LA Representative
Cllr H Davies	LA Representative
Mrs N Pease	Community Representative
Cllr Huw Thomas	Additional Community Representative
Mrs W Thomas-Davies (Chairperson)	Community Representative
	Community Representative
Mr N Crocker	Parental Representative
Mrs Rhian Joseph-Morgan	Parental Representative
Mrs Meryl Jones	LA Representative
Ms G Van Gompel	Parental Representative
Mrs L Jones	Parental Representative
Mrs Miriam Evans	Staff Representative
Mrs Bethan Jones	Teacher Representative
Mr Edward Davies	Headteacher

Daily Timetable September 2025

Breakfast Club	8:00 – 8:45
Doors Open	8:45
Registration	9:00 – 9:05
Session 1	9:05 – 10.30
Morning Break	10:30 – 10.45
Session 2	Nursery to Year 2 10:45 – 11.55 Years 3 - 6 10.45 – 12:05
Lunch	Nursery to Year 2 11:55 – 1:05 Years 3 -6 12:05 – 1:05
Registration	1:05 – 1:10
Session 3	1:10 – 2:20 Nursery to Year 2 1.10 – 2.45 Years 3 -6
Afternoon Break	2:20 – 2:35 Nursery to Year 2 2.45 – 3.00 Years 3 -6
Session 4	Nursery to Year 2 2:35 – 3:20 Years 3 -6 2:35 – 3:30
End of the Day	Nursery to Year 2 3:20 Years 3 - 6 3:30

The school's main entrance will open at 8:45. A member of staff is on duty each morning to meet the children and parents as they arrive.

To facilitate the arrangements at the end of the school day, please inform the class teacher at the beginning of the day if there is a change to your child's end-of-day travel arrangements.



School uniform

The school uniform which is worn by all pupils can be bought via ParentPay and collected from the school Office. Please write your child's name on all garments.

Clothes for Physical Literacy

We ask that the children wear the school purple 'cool' T-shirt (100% Polyester) black shorts and suitable footwear for their physical literacy sessions. If the weather is cold, children can wear a tracksuit trouser for the lesson. Please remember to write your child's name on each garment. Pupils in Barcud Coch (Reception Class) and Brienne classes (Year 1 Class) can wear their physical literacy clothes to school on the day of the lesson. Pupils in all other classes are to bring their clothes into school on the day of the lesson and change in the changing rooms.



Swimming lessons– Each child needs to wear a swimming cap for their swimming lesson.



Curriculum for Wales Ysgol Rhys Prichard

Our curriculum has been co-constructed through engaging with all stakeholders and will meet the following requirements:

Our vision

Develop happy, healthy and bilingual pupils who achieve their potential in a positive and memorable learning environment.

Our values

- Respect
- Healthy
- Happy
- Independence
- Welshness
- Family

Our inclusive curriculum

Our curriculum will raise the aspirations for all learners. As a school we have considered how all learners will be supported to realise the four purposes and to progress. We have considered our ALN provision and how we will meet the needs of different groups of learners.

The four purposes

The four purposes are the starting point and aspiration for our school curriculum design. Our school aims to support our learners to become:

- ambitious, capable learners, ready to learn throughout their lives



- enterprising, creative contributors, ready to play a full part in life and work

- ethical, informed citizens of Wales and the world



- healthy, confident individuals, ready to lead fulfilling lives as valued members of society

The statements of what matters

Our curriculum will provide opportunities and experiences to develop the key concepts, knowledge and skills as described in the statements of what matters and in line with the Statements of What Matters Code.

Areas of Learning and Experience

Our curriculum will provide learning experiences through the 6 AoLEs of:

- Languages, Literacy and Communication
- Expressive Arts
- Science and Technology
- Humanities
- Maths and Numeracy
- Health and Wellbeing



Learning, Progression and Assessment

Our curriculum will support learning through designing learning opportunities that draw upon the pedagogical principles.

Our curriculum, supported by effective teaching and learning, enables learners to make meaningful progress. Over time our learners will develop and improve their skills and knowledge. Our curriculum focuses on understanding what it means to make progress in a given area or discipline and how learners should deepen and broaden their knowledge and understanding, skills and capacities, and attributes and dispositions and is informed by the Progression Code. This in turn supports our approach to assessment, the purpose of which is to inform planning for future learning. Assessment will be embedded as an intrinsic part of learning and teaching. All learners will be assessed on entry to the school.

Welsh

Schools providing Welsh-medium education use Welsh to deliver the curriculum. English lessons are introduced in Year 3.

Cross curricular skills

Our curriculum will develop the mandatory cross-curricular skills of literacy, numeracy and digital competence. Our curriculum will enable learners to develop competence and capability in these skills and to extend and apply them across all areas. Learners will be given opportunities across the curriculum to:

- develop listening, reading, speaking and writing skills
- be able to use numbers and solve problems in real-life situations
- be confident users of a range of technologies to help them function and communicate effectively and make sense of the world.

UNCRC : United Nations Convention on the Rights of the Child.

Our school will promote children's knowledge and understanding of their rights.

CWRE : Careers and Work-related Experiences

Although our learners are young, our curriculum will incorporate careers and work-related experiences for all of our learners.

Relationship and Sexuality Education RSE

Our school curriculum embraces the guidance in the RSE Code. Our RSE provision will have a positive and empowering role in our learners' education and will play a vital role in supporting them to realise the four purposes as part of a *whole-school approach*. Helping learners to form and maintain a range of relationships, all based on mutual trust and respect, is the foundation of RSE. These relationships are critical to the development of emotional well-being, resilience and empathy.

Religion Values and Ethics



Religion, values and ethics (RVE) is a statutory requirement of the Curriculum for Wales and is mandatory for all learners from ages 3 to 16.

There is **no parental right** to request that a child is withdrawn from RVE in the Curriculum for Wales. As RVE is a locally determined subject, the agreed syllabus specifies what should be taught in RVE within the local authority and our curriculum will reflect this guidance.

Review and refinement

Our school curriculum will be kept under review in order to respond to the outputs of professional inquiry, the changing needs of learners and social contexts and needs. The reviews will take into account the views of stakeholders and will be signed off by the Governing Body. We will publish a summary of our curriculum and revise the summary if changes to the curriculum are made during the review process.

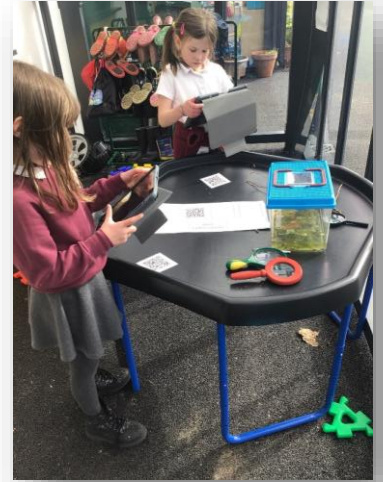
Progression Steps



Progression Steps 1 and 2 (Reception to Year 3)

In our school progression steps 1 and 2 is about enhancing the learning experiences which enable children to be creative, imaginative and to have fun whilst learning. Children have more opportunities to explore the world around them and to understand how things work through engaging in relevant practical activities which are fun and enjoyable and relevant to their developmental ages.

Our indoor and outdoor environments are fun, exciting, stimulating and safe. They promote children's development and natural curiosity to explore and learn through first-hand, real-life experiences.



Progression Step 3 (9 to 11 years old - Years 4 to 6)

In progression step 3 pupils are given opportunities to build on the experiences gained during progression steps 1 and 2, and to promote their knowledge and understanding of Wales, their personal and social development and well-being. The aim of the school is to ensure that the education provided enhances the

spiritual, moral, cultural, mental and physical development of each pupil and that the nature of the curriculum is varied, broad and balanced. The organisation within the classroom therefore needs to be flexible. The children learn together as a class unit in the care of a designated teacher.



Teaching and Learning

The teachers consider each child's ability individually. Work prepared is differentiated thus ensuring individual development. To ensure an understanding of the work a variety of teaching methods are used such as individual teaching, pair or group work and class teaching.

The work in the classroom is often reinforced with direct experiences such as visits to historical sites, theatre visits or visits to the school by 'theatre in education' companies and guest speakers.

Assessment For Learning:

We focus on the pupil's achievement and on ways in which they can move forward:

- Where they are in the learning continuum
- Where they need to go
- How best to get there

Teachers plan to provide opportunities for assessment for learning to gain knowledge of learner's strengths and of areas that require further development.



Language Policy

The school asserts its belief in the educational value of acquiring two languages.



The aim of our bilingual policy is to teach children to be totally bilingual in the use of Welsh and English by the time they leave primary school to enable them to participate fully in the bilingual community of which they are a part. The provision at the school should ensure that each child is able to communicate confidently in both languages and be aware of Welsh cultural heritage.



Being bilingual has several advantages:

- The school is situated in an area where Welsh is spoken and used widely. It is therefore important that the school's pupils develop the ability to use both languages confidently and fluently, so that they can choose to take part fully in all aspects of life in the area.
- Some of our children will move on to learn other languages in the future, and research shows that children who are bilingual learn other languages faster than those who speak only one language.
- Also, in the long term, the ability to use both languages is an important advantage in the workplace in Wales. Therefore, ensuring that children can develop the ability to speak both languages means wider work and development opportunities either locally or internationally.





The children start school at the beginning of the term after their fourth birthday, some from homes where Welsh is the first language, others where one parent speaks Welsh and others from English speaking homes.

Welsh is the main medium of the life and work of the school.

Collective Worship

The Morning Assembly has an important place in the life of the school. During these periods, the staff and children come together for worship and the sharing of experiences. Children are given the opportunity of taking part in the service as individuals, groups or class, and opportunities are given to congratulate them and highlight their good deeds and successes. Worship can take place either within the classroom, as progression steps or as a whole school, and children are expected to respect and appreciate these occasions.



Breakfast Club

The breakfast club runs at the school from 8am to 8.45am. Your child must be in school by 8.30am to have breakfast. The breakfast club is accessed through the hall entrance located in the school's rear car park. You must sign your child into club every morning. A choice of cereals, brown toast and different juices are offered which comply with the latest Healthy Eating Regulations and Guidance for Schools in Wales.

School Meals

All primary age pupils receive free school lunches. This is as a result of the increasing food cost pressures on families and the Welsh Government's ambition to tackle child poverty, a plan is in place to ensure that no child goes without food at school. All Primary School children in Wales are now eligible for Free School Meals. The scheme was introduced in September 2022. You can find out more at this link:

[Free School Meals and Free School Meals for All Primary School Children - Carmarthenshire County Council](#)

This means they have a two-course meal to include a vegetarian and dessert option. Fresh fruit and drinking water are also available at the school. Carmarthenshire County Council's menu runs on a 3-week rotational basis, which is changed twice a year in May and October to allow for seasonal variances.

School meals provided by the school comply with the Healthy Eating in Schools (Wales) Regulations (2014) with the menus provided by the Local Authority's School Meals Service. The School Meals Service has been awarded a Certificate of Compliance, which confirms that it adheres to the Healthy Eating Regulations and provides pupils with a balanced and healthy diet. See the link below for more information on this -

[healthy-eating-in-maintained-schools-statutory-guidance-for-local-authorities-and-governing-bodies.pdf](#)

School meals must be booked in advance, using ParentPay. You will receive a code to create an account on the Parent Pay system when your child starts school.

Lunch Box

Learners who wish to bring a lunch box to school are welcome to do so. As a school that promotes healthy lifestyles, we encourage parents/carers to prepare a healthy lunch box for their children so that messages are constantly repeated in relation to healthy eating and drinking. As a school we do not allow fizzy pop or energy drinks inside lunch boxes and discourage parents from including unhealthy treats such as crisps, biscuits, sweets and chocolate. Useful information on preparing a Healthy Pack Lunch can be found here: [Healthy Packed Lunches](#)

Snacks and drinks

In accordance with the National Healthy Eating Regulations and Guidelines (2013), and our Food and Fitness Policy, as a school we only allow snacks that are healthy and water on the school premises. Information about healthy snacks can be found here: [Healthier snacks - Food facts - Healthier Families - NHS](#)

Learners are allowed to bring fruit and vegetables as a snack to eat during break times

Free milk

The school engages with the Free Milk Scheme and all learners from Nursery to year 2 are eligible for free milk.

Assessment and reporting

Every year a Parent's Evening is held so that they may see the child's work and discuss his/ her development with the teacher. A written progress report on each child is sent out to parents at the end of the Summer term where specific targets are set for each child to move their learning forward.

Parents are also welcome to visit the school at any time convenient to the teacher and parents to discuss their child's progress on any problems that might arise. Parents with questions about their children's educational, behavioural, or physical developments are invited to discuss the problem with the Head teacher. Often the above problems can be dealt with successfully at school.



Voice of the learner

The learner's voice is important to us in school. We listen to the pupil's voice and act on the pupil's voice through our councils – School Council, Eco Council, Bronze Ambassadors, Digital Ambassadors and Welsh Crew. They work hard to gather pupils' views and then create individual action plans on areas that affect them including wellbeing.



School Council

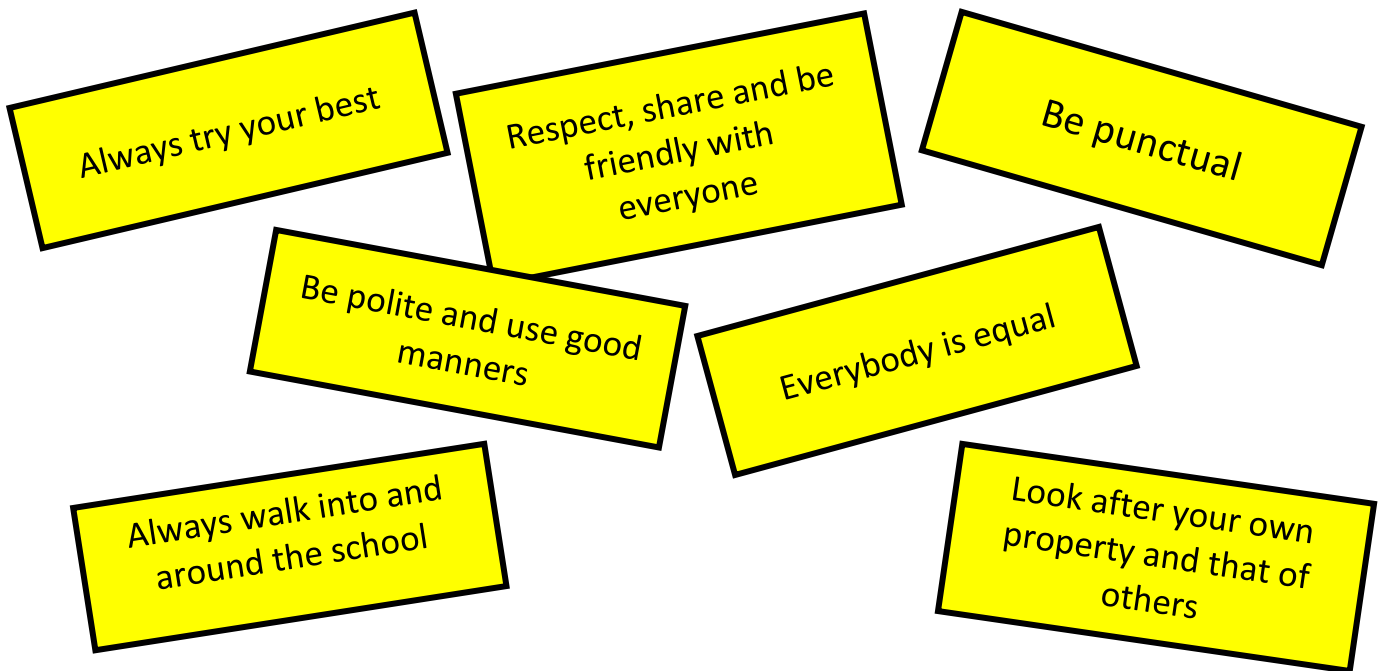
The School has a School Council which is comprised of pupil representatives for each year group. The council provides an opportunity for children to express their opinions about the school and make suggestions to the Head teacher.

Discipline

Overall responsibility for the school discipline rests with the Headteacher, but it is a matter for everyone connected with the school, including parents. Children are expected to conform to certain standards of behaviour. All pupils are encouraged to follow the school's 'Golden Rules' listed below



GOLDEN RULES



We also hold a 'Star of the Week' assembly where we praise the achievement of pupils who have performed exceptionally well in various aspects of school life.





Additional Learning Needs

Additional Learning Needs and Education Tribunal Act (ALNET 2018)

The system for supporting children and young people with Special Educational Needs (SEN) and disability in Wales has changed. The Welsh Government is bringing in a new more flexible and responsive system of meeting the needs of children with SEN or disabilities and is striving to deliver a fully inclusive education system for the learners of Wales.

The new system will ensure:

- needs are identified early, addressed quickly

and all learners are supported to reach their potential.

- our professionals are skilled and confident in identifying needs and deploying strategies to help learners overcome their barriers to learning.
- that the learner is at the centre of everything we do and that they and their parents/ carers are equal partners in their learning. (Person Centred Practice)

From September 2021 the new system will be **brought in gradually** over the next few years (2021 - 2024). Here are some of the key messages about these changes and what they may mean for you and your child.

Key Messages

- The term Additional Learning Needs (ALN) will replace the terms Special Educational Needs (SEN) and Learning Difficulties and Disabilities (LDD).
- Special Educational Needs Coordinators (SENCOs) in schools will now be called Additional Learning Needs Coordinators (ALNCOs).
- The mandatory ALN Code for the new system will cover children and young people aged 0-25 years. This means that early years and further education colleges will have duties under the Act, but this does not include higher education or apprenticeships.
- The current graduated system of Early Years/School Action, Early Years/School Action Plus and Statements is being replaced over the course of the next 3 years.
- All children and young people with an identified Additional Learning Need (ALN) that requires Additional Learning Provision (ALP) will have an Individual Development Plan (IDP).
- The IDP will replace all other individual plans. IDPs for children under compulsory school age, who require them, i.e. in the early years, will be maintained by Local Authorities.
- Most Individual Development Plans will be maintained by the school but may also be maintained by the Local Authority for those learners with the most complex needs.
- The Act expects that all partners such as Education, Health and Social Care will work in collaboration to support children and young people with ALN.

- There will be increased opportunities for children, young people, parents/carers to contribute to the creation and maintenance of Individual Development Plans through Person Centred Practice (PCP).
- It is expected that working together more closely should help to avoid disagreements.
- All reasonable steps will be taken to ensure Additional Learning Provision (ALP) will be provided in Welsh, if required.

Safety

The safety of our pupils is of paramount importance within the school. We have taken appropriate procedures to ensure the safety of all learners and all visitors must report to the office and sign the visitor's log.

The school has a comprehensive health and safety policy that promotes the safety of all stakeholders. The school carries out numerous risk assessments that cover all parts of school life e.g. educational off-site visits. Copies are kept in the school office. Key policies and documents can be found on the school website.

Inclement weather

The decision to close the school rests with the Head teacher in consultation with the Chair of Governors. If the decision is taken to close before the beginning of the school day then the school will email all parents directly and share this information on the school website and facebook page along with Carmarthenshire County Council website

When inclement weather necessitates the early closure of school, steps will be taken to invite parents to collect pupils. If this is impossible, we shall ensure that your children are in a safe place until parents arrive home e.g. grandparents' house or near neighbours.

Attendance

Your child's school attendance is key to your child's development. As parents you have a legal responsibility to ensure that your child attends school regularly and you should notify the school before 9.00 a.m.. on the first day of absence if your child is unable to attend school.

All schools are required to record pupil absence either as authorised or unauthorised. If parents fail to notify the school of absence, it is automatically recorded as unauthorised leave against the child. Parents should notify the school in writing if absence is known in advance. The school reserves the right in all cases of absence to determine the category of absence.

When a child has a medical appointment during the school day parents should inform the school what time the child is scheduled to be picked up. No child is allowed to leave school unless picked up by a responsible adult.

Admissions

Carmarthenshire County Council manages admissions to the school. The maximum number of pupils to be admitted is determined by the admission number set annually in consultation with the Governing Body.

The criteria for considering admissions of pupils to school:

- written expressed preference by parents.
- the number of pupils that can be admitted by the school.
- the geographical area which the school normally serves.
- sibling links.
- specific medical and social reasons appertaining to the prospective pupil.

On admission a home/school agreement is signed.

[School Admissions and Changing Schools - Carmarthenshire County Council](#)

Health and wellbeing

Wellbeing refers to the state of being comfortable, healthy, and happy. While happiness is an integral part of our personal well-being, well-being includes other things like achieving long-term goals, our sense of purpose, and how we feel in life. It is an active process of becoming aware of a healthy and fulfilling life and making informed choices.



Health and Wellbeing is instrumental to a child's development and is one of the learning areas of the Curriculum for Wales. We teach the requirements of the learning area by following a scheme called 'Jigsaw' which ensures coverage of all aspects. The Health and Wellbeing of our pupils is reflected in our vision and values. All learners are educated on how to make informed choices in relation to healthy lifestyles. Our reward system allows all learners to feel success and satisfaction.

Learners, through the Schools Promoting Health and Wellbeing Programme are taught about 7 subjects of Health: Food and Fitness, Hygiene, Safety, Environment, Substance Use and Misuse, Personal and Relationships Development and Mental and Emotional Health.

Our school has a wellbeing team which includes ALNCo, ELSA who support learners with additional emotional needs as well as experienced intervention programme leaders.

A school nurse and a speech therapist visit the school regularly. You will be notified in advance of the

date and time. We welcome Dyfed Powys Police to the school to run their educational programme with our pupils. We are working with Spectrum Cymru to raise awareness about healthy relationships at a level appropriate to the age and ability of the pupils.

Medicine

Arrangements will be made in school to assist pupils who are ill and who require to take medicines upon their doctor's advice. These provisions will be made for children who suffer from some form of chronic illness or allergy (e.g. asthma, diabetes) or because they are completing a course of treatment whilst recovering from a long-term illness.

If you want the school staff to give your child medicine then you must fill in the medicine form which is on the school website.

[YSGOL RHYS PRICHARD, LLANYMDDYFRI](#)

Illness or injury

It is the duty of parents to make arrangements for pupils who become unwell at school, by collecting them to take them home or to the doctor or hospital. If parents or relatives are not available when a pupil becomes unwell or injured, medical advice will be sought and, if necessary, the assistance of the ambulance service. In exceptional circumstances, it may be necessary for the Head teacher to arrange for the pupil to be conveyed to the home or the hospital.

We ask that parents/guardians keep their children at home for at least 48 hours following a period of sickness.

[Cymraeg Cyfnod Gwahardd ar gyfer Heintiau Cyffredin\(Gorffennaf v7\).docx](#)



We as a school comply with the latest All Wales Infection Prevention and Control Guidance, published by Public Health Wales, July 2024, in relation to any Infectious Learner related outbreaks, Outbreaks and Hygiene: [Welsh Health protection in children and young people settings including education. docx - terfynol.docx](#)

Financial support

You could be eligible for financial aid to purchase uniform, a reduction in school trip costs, free music lessons and assistance in paying water bills. For more information visit

<https://www.carmarthenshire.gov.wales/home/council-services/education-schools/school-meals/free-school-meals/>

Access for disabled pupils

Our aim is to do our utmost to ensure that pupils who suffer from any disability - physical, mental or learning disabilities are admitted to Ysgol Rhys Prichard. We are an inclusive school and would endeavour to ensure that all pupils have full access to all aspects of school life.

Home school agreement

The aim of the Home School Agreement is to ensure a successful partnership between the child, parent and school. In signing the agreement all parties involved consent to work successfully for the welfare and education of the child. The home school agreement is presented to all pupils when they begin at school. The principles promoted by the agreement are the welfare, happiness, education, discipline, and health of the pupils as noted in the school's aims and objectives.

Pastoral Care

The Head Teacher has the overall responsibility for the school and he will depend on the close co-operation of all members of staff in caring for the pupils. Each pupil is allocated to a class for the purpose of registration and this enables the class teacher to be personally responsible for the pastoral care of his/her pupils. The school keeps a record of the telephone numbers of parents and in case of accidents, should a child require medical treatment, every effort is made to contact parents first, depending on the seriousness of the case. Minor accidents will be dealt with by members of staff, but in the case of a more serious accident, the pupils will be taken to a doctor. In all cases where serious accidents occur full details will be forwarded to the Risk Assessment unit of the Local Education Authority.

During playtime, a member of teaching staff as well as members of the support staff are on duty in the playground, or in the case of inclement weather, in the school. During the lunch period, supervision is carried out by staff. The Head teacher has the specific responsibility for the pastoral care of looked-after children.



Bullying policy

The school has a firm policy on bullying that states that every pupil has the right to receive his/her education in a safe, caring and happy environment. Our aim is to ensure that no form of bullying occurs. We work towards eliminating bullying in all its forms with the help of fellow pupils, staff, parents and governors. If you suspect that your child is being bullied then you should contact the school immediately – please do not raise this matter with individual pupils or parents.

[Anti-Bullying-Policy-2024-.pdf](#)

Children Looked After - CLA

The Headteacher is responsible for promoting the educational achievement of 'Children Looked After'. This is done in conjunction with the class teachers, ALNCo, the education department and the relevant social services.

Child protection

Parents/Carers should be aware that schools have a responsibility to ensure the well-being of all pupils. Mr E Davies is the designated safeguarding officer for children. Mrs B Jones and Mrs T Aston-Rees are the designated child protection teachers. Mrs Wendy Thomas–Davies, Chair of the Governing body is the designated governor for Child protection.

To ensure the wellbeing of all pupils we will

- ensure that the school has a policy on child protection and it's procedures. We use the 'My Concern' system to identify any wellbeing/safeguarding concerns.
- ensure that all members of staff are checked by DBS and that visitors have had all the appropriate checks and that all visits are planned in advance.
 - inform parents or carers that we have a child protection policy, which we include in the school's prospectus, and this means that we may need to refer their child to the statutory child welfare agencies if we believe that the child or other children are at risk of significant harm;
- Work with parents/carers regarding their child's welfare and remain impartial if their child is or has been referred.
- Help parents or carers understand that if the child is referred to social services or the police, then this is in the best interests of the child and that the school will contribute to any child protection or police investigation in relation to their child's well-being and educational progress
- Provide parents/carers with regular updates on the child's wellbeing and educational progress.

The headteacher Mr E Davies is the school's child protection co-ordinator and Mrs B Jones takes on this responsibility in his absence.

[Safeguarding-Statement-24.pdf](#)

Online safety

Learners' access to the internet can increase the risk of cyberbullying, viewing inappropriate content, data breaches, and online predators. The Welsh Government expects local authorities to implement web filtering standards to keep learners safe online: Our LEA provides the school with Network Security Measures, such as firewalls to protect against security incidents. This ensures that learners are not able to access inappropriate websites while at school. Our e-security policy is below-

[E-Safety-Policy-2025.pdf](#)

We teach our learners how to stay safe online at a level appropriate to the age of our pupils. We follow the rules of SMART-



Complaints

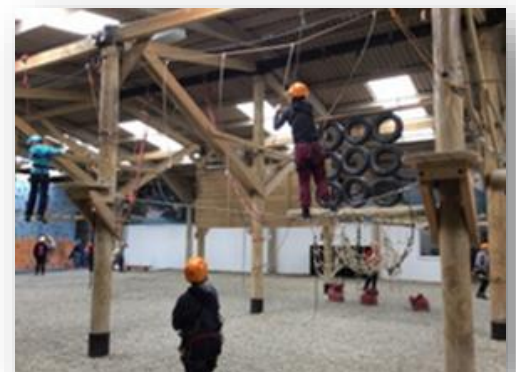
Complaints should be directed to the Head teacher. If it is not possible to resolve the complaint within the establishment then the Head teacher will follow the procedures arranged by the Governing Body of the school and Carmarthenshire County Council.

[Complaints-Policy-2025.pdf](#)

School holidays

School holiday dates can be found here

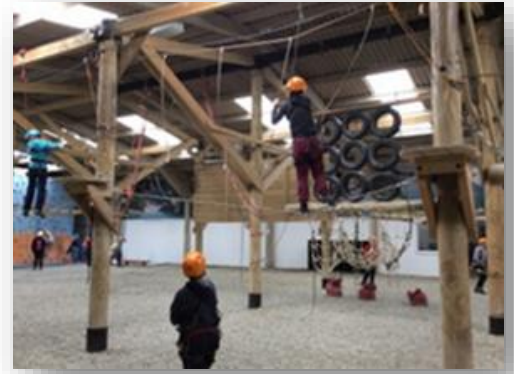
[Dyddiadau'r tymhorau a gwyliau ysgolion - Cyngor Sir Caerfyrddin](#)



Charging for school activities

The Governing Body of the School recognises the valuable contribution that the wide range of additional activities, including trips, sport and residential experiences can make towards pupils' education.

Every child has the right to a free education and so it is at Rhys Prichard school. However, a contribution is kindly asked from parents towards the cost of some activities. The school tries to keep cost to the minimum.



Equal opportunities

We are committed to providing the highest possible standards of education for our pupils and will endeavor to meet the needs of all without unfair discrimination of any kind.

We will:



- Challenge prejudice or unreasonable beliefs about groups in society and endeavor to instill tolerance and acceptance of differences.
- Promote and celebrate diversity within our community and beyond.
- Seek to become an inclusive community, in the widest sense of the word.
- Prepare pupils for adult life in a multi-cultural society.

Parents

A successful school relies upon the goodwill and active participation of the parents. We value the skills and time that you have to offer. There are a number of ways you can help your child(ren) and enhance the life of the school.

Datblygu sgiliau rhifedd a llythrennedd

Develop numeracy and literacy skills



- Darllen gyda'ch plentyn Reading with your child
- Darllen storiâu i'ch plentyn Reading a story to your child
- Gwrando ar eich plentyn yn darllen Hearing them read to you
- Datblygu gwaith rhif adre Developing understanding of number
- Cefnogi eich plentyn Supporting your child

A oes gennych unrhyw sgiliau, talentau neu arbenigedd i'w gynnig? e.e.
Have you got any skills, talent and expertise to offer? e.g.



- Garddio Gardening
- Celf a Chrefft Art and Craft
- Cerddoriaeth Music
- Gwaith coed Carpentry
- Peintio Painting and decorating

A fedrwyd chi helpu gyda gweithgareddau allgyrsiol? e.e.
Can you help with extra-curricular activities? e.g.



- Cynllun 'Kerbcraft'
- Helpu ar driplau ysgol neu mabolgampau
- Codi Arian
- Kerbcraft Scheme (Road Safety)
- To supervise on trips or sports days etc.
- To help with fundraising